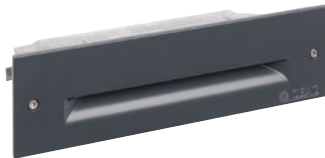
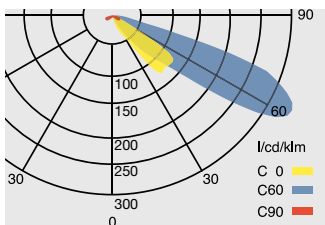
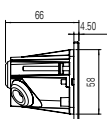
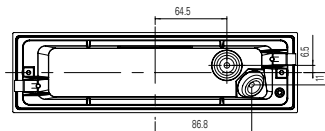
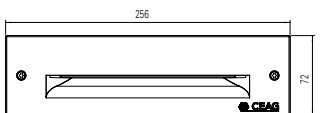


91011 LED CG-S



Dimensions in mm



Light distribution curve 91011 LED CG-S

91011 LED CG-S

- Aluminum LED Step light for safety lighting, suitable for recessed mounting
- High IP65 protection class
- Optimised step illumination achieved through integrated lens optic in the cover
- Developed for applications where people are situated in deeper positions for example lecture halls. A special optical arrangement avoids blinding those facing the audience.
- Four adjustable levels of brightness (100%, 80%, 60%, 40%) to adapt to the ambient brightness
- Side mounting claw-fastening for easy installation in hollow walls or wooden steps (clamping range 3-30 mm)
- Shortened inspection effort due to CEWA GUARD technology
- Automatic function monitoring of up to 20 luminaires per circuit
- Reduced installation expenditure with STAR technology
- Freely programmable mixed operation of the switching modes per luminaire in one circuit

Luminous flux	33 lm
Luminous flux Φ_E/Φ_N at end of rated operating time	100 %
Housing material	Aluminium diecast
Housing colour	Anthracite RAL 7016 (Bezel)
Weight	0.57 kg
Type of mounting	Wall or step recessed
Terminals	Clamp terminal 2 x 3 x 2.5 mm ²
Connection voltage	220 - 240 V AC, 50/60 Hz 176 - 275 V DC
Power consumption mains operation (apparent power/effective power)	4.6 VA / 2.1 W
Permissible ambient temperature	-20 °C to +40 °C
Current consumption, battery operation (220 V)	10 mA
Light source	7 x 0.2 W LED / 4000 K

Ordering details

Type	Scope of supply	Order No.
91011 LED CG-S	Step light IP65 with LED supply, CG-S technology and LED PCB (4000 K), including fixing claw-fastening for installation in hollow walls	40071352091

Accessories

Type	Order No.
Recessed enclosure for Luminaire 91011 LED CG-S, for plastering or for installation in concrete	40071354961